



*AutoBase*



**ATP15/15P/17/19**

**User Manual [Ver. 1.1]**

Just Touch  
autobaseTouch

Intelligent  
Touch Panel  
Computer

<http://www.autobase.biz>



# autobaseTouch

ATP15/ATP15P/ATP17/ATP19

 *AutoBase, Inc.*

This user manual and all about copyright of Autobase ATP series panel computer

© 2012 Autobase, Inc. All rights reserved

Second edition, April, 2013

< Notice >

Information in this document is subject to change without prior notice.

# Contents

- 1. ATP Configurations .....5**
  - 1.1 ATP Hardware Specifications ..... 5
  - 1.2 Part Names and Description ..... 6
  - 1.3 ATP15 Dimensions and Panel Cut-out..... 7
  - 1.4 ATP15P Dimensions and Panel Cut-out..... 8
  - 1.5 ATP17 Dimensions and Panel Cut-out..... 9
  - 1.6 ATP19 Dimensions and Panel Cut-out.....10
  
- 2. Serial Communication Port ..... 11**
  - 2.1 Serial Communication port .....11
    - 2.1.1 RS-232C dedicated port .....11
  - 2.2 RS-232C/RS-422 Mode Settings .....12
    - 2.2.1 RS-232C Mode .....12
    - 2.2.2 RS-422 Mode .....13
  
- 3. Automated System Recovery ..... 15**
  - 3.1 System Recovery .....15
    - 3.1.1 Initialization state recovery .....15
    - 3.1.2 Restore point update.....16

## **4. Manual System Recovery ..... 19**

4.1 Device Driver Setup.....	19
4.1.1 Mainboard chipset driver setup.....	19
4.1.2 Audio driver setup.....	23
4.1.3 Graphic driver setup.....	26
4.1.4 Touch screen driver setup.....	29
4.1.5 Ethernet driver setup.....	32
4.2 Programs for Autobase Touch Pro Pack .....	34
4.2.1 AutoBase Touch SCADA Program installation.....	34

## **Customer service..... 35**

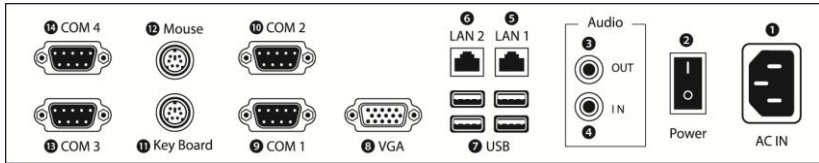
# 1. ATP Configurations

## 1.1 ATP Hardware Specifications

Items	Models			
	ATP15	ATP15P	ATP17	ATP19
Display	15" XGA (1024 * 768)	15" XGA (1024 * 768)	17" SXGA (1280 * 1024)	19" SXGA (1280 * 1024)
CPU	Intel ATOM N270 1.6GHz (FSB 533/667MHz)			
Touch Controller	Pen Mount 5-wire USB controller			
Mainboard Chipset	Intel 945GSE and ICH7-M			
Main Memory	DDR2 2GB (667MHz/PC5300)			
Storage	SSD 60GB(Max Read:500MB/s Write:400MB/s) or HDD 500GB(SATA2 7200RPM)			
VGA	Intel GMA 950 Graphics Dual Channel 128MB(LVDS/Analog)			
Serial/Printer Port	3 RS-232C, 1 RS232C/422/485 Option, 1 Printer Port			
USB	4 USB Ports			
Ethernet Port	Dual Gigabit Ethernet (10/100/1000Mbps/s) LAN Ports			
Keyboard/Mouse	PS2			
CD-ROM	-			
OS	Windows Embedded POSReady 2009			
Utility	Rescue (Recovery Tools Included)			
Voltage	AC 115 ~230V			
Power	43~55W			
Weight	5.85 kg	5.77 kg	7.69 kg	8.91 kg
Waterproof	X	Front(IP65)	X	X
Service life of LCD backlight	40,000h or more			

<Table 1-1> AUTOBASE Touch hardware specifications

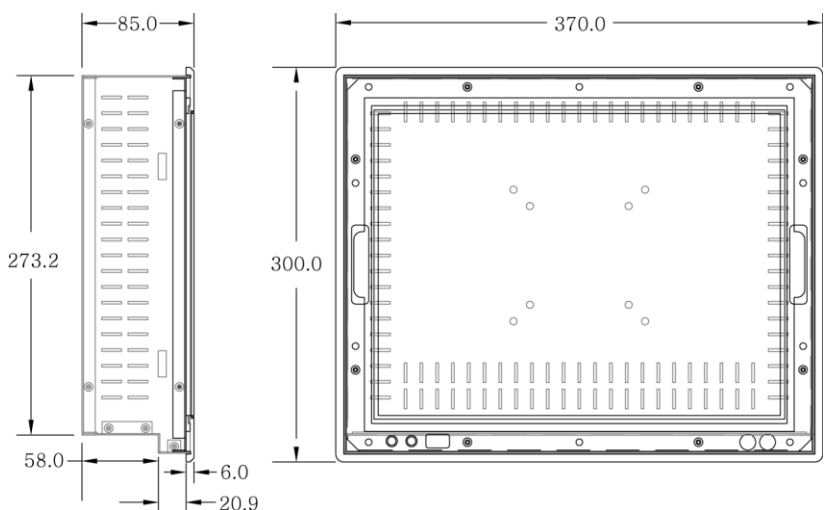
## 1.2 Part Names and Description



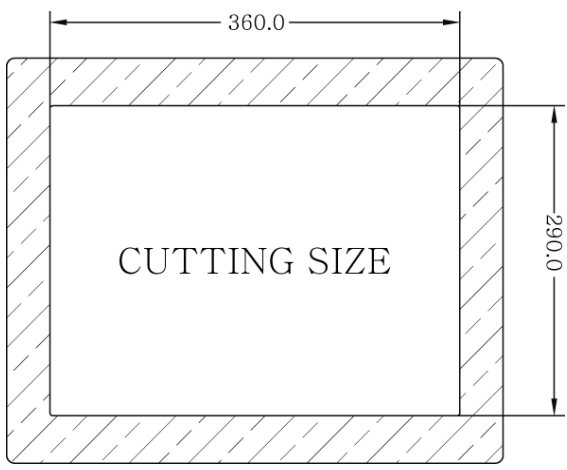
<Figure 1-1> Input/output ports of ATP series

- ❶ AC IN : Power input connector
- ❷ Power ON/OFF : Power On/OFF switch
- ❸ Audio OUT : Stereo speaker output port
- ❹ MIC IN : Microphone input port
- ❺ LAN 1 : 10/100/1000 Base-T Ethernet port
- ❻ LAN 2 : 10/100/1000 Base-T Ethernet port
- ❼ USB : USB 4 ports
- ❽ VGA : External D-SUB VGA monitor output port
- ❾ COM 1 : RS-232C input/output ports
- ❿ COM 2 : RS-232C/422 input/output ports (Factory setting: RS-232C)
- ⓫ Key Board : PS/2 Keyboard port
- ⓬ Mouse : PS/2 PS/2 mouse port
- ⓭ COM 3 : RS-232C input/output port
- ⓮ COM 4 : RS-232C input/output port

### 1.3 ATP15 Dimensions and Panel Cut-out



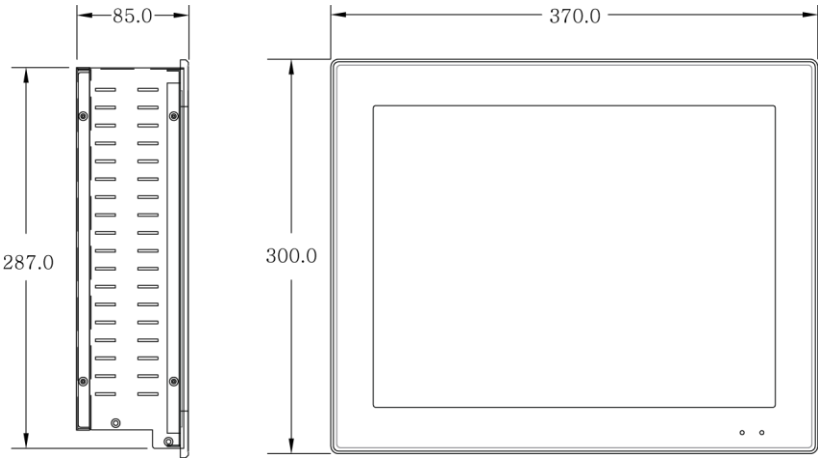
<Figure 1-2> ATP15 dimensions(unit : mm)



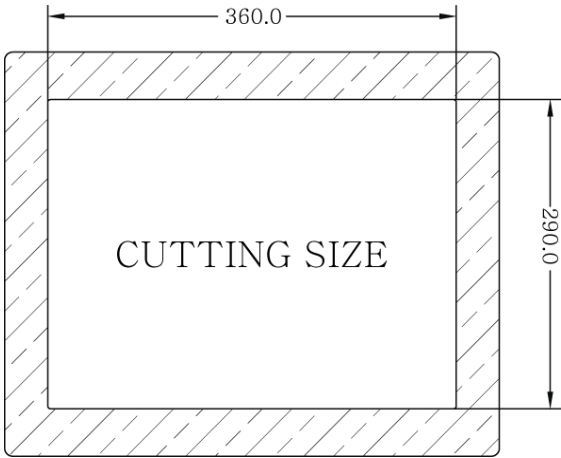
<Figure 1-3> ATP15 panel cut-out dimensions(unit : mm)



# 1.4 ATP15P Dimensions and Panel Cut-out

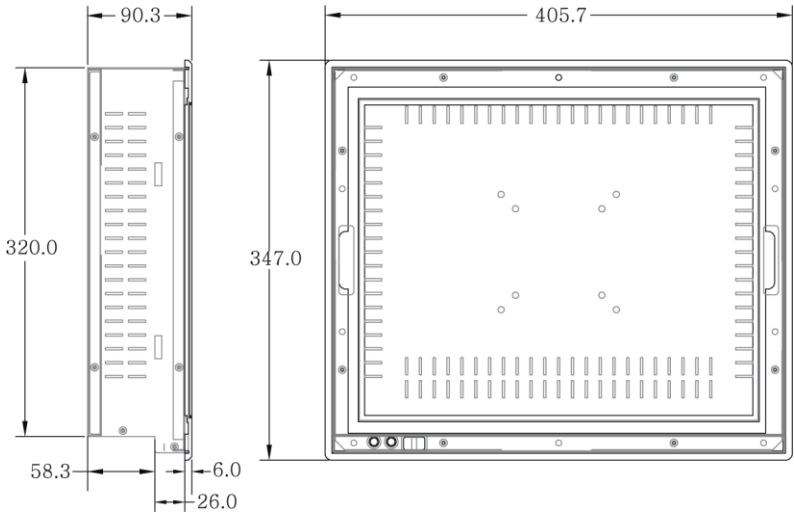


<Figure 1-4> ATP15P dimensions(unit:mm)

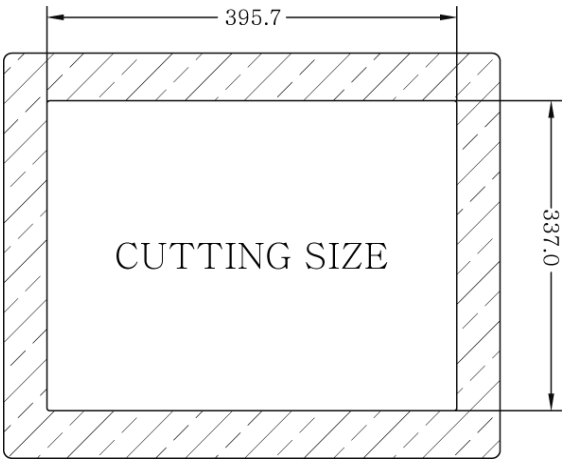


<Figure 1-5> ATP15P panel cut-out dimensions(unit : mm)

# 1.5 ATP17 Dimensions and Panel Cut-out

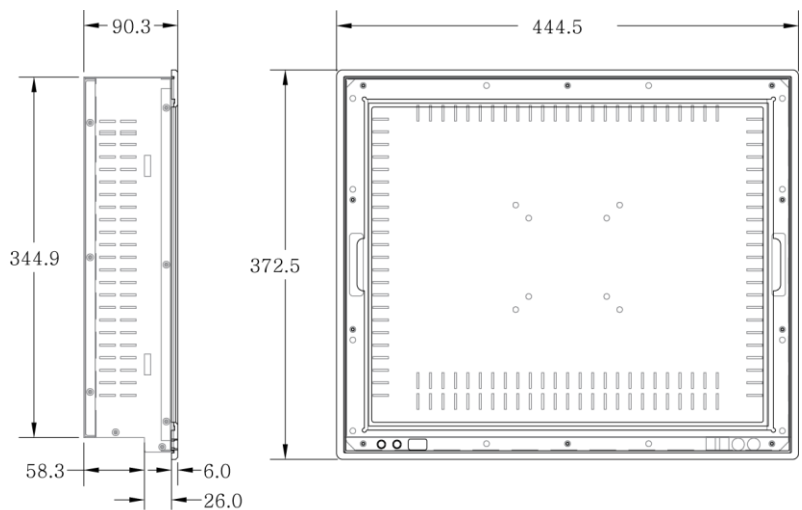


<Figure 1-6> ATP17 dimensions(unit : mm)

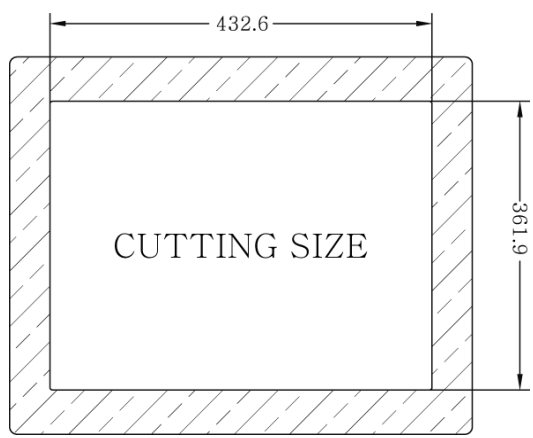


<Figure 1-7> ATP17 panel cut-out dimensions(unit : mm)

1.6 ATP19 Dimensions and Panel Cut-out



<Figure1-8> ATP19 dimensions(unit : mm)



<Figure 1-9> ATP19 panel cut-out dimensions(unit : mm)

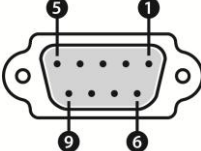
# 2. Serial Communication Port

## 2.1 Serial Communication port

ATP15, ATP17, ATP19 have 4 serial ports for communications.  
And COM1/COM3/COM4 Serial ports, except COM2, are RS-232C dedicated port and they are able to be used only as RS-232C. RS232C/RS422 setting for COM2 is possible to use the board jumper switch.

### 2.1.1 RS-232C dedicated port

COM1/COM3/COM4 serial ports support the RS-232C only.  
<Table 2-1> shows pin functions for RS-232C. Before you connect device with serial port, verify the pin functions.

Details of the Connector	
	
Pin Number	Function
1	DCD (Data Carrier Detect)
2	RXD (Receive Data)
3	TXD (Transmit Data)
4	DTR (Data Terminal Ready)
5	GND (Ground)
6	DSR (Data Set Ready)
7	RTS (Request to Send)
8	CTS (Clear to Send)
9	RI (Ring Indicator)

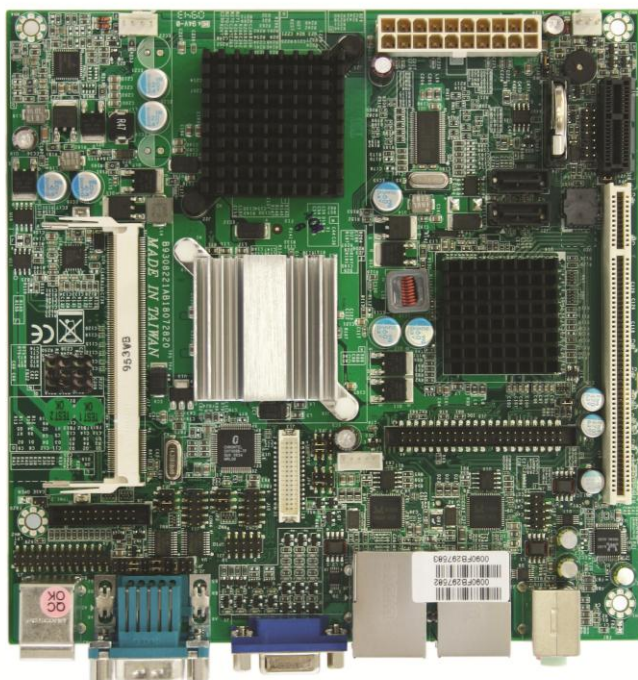
<Table 2-1> RS-232C Pin Functions

## 2.2 RS-232C/RS-422 Mode Settings

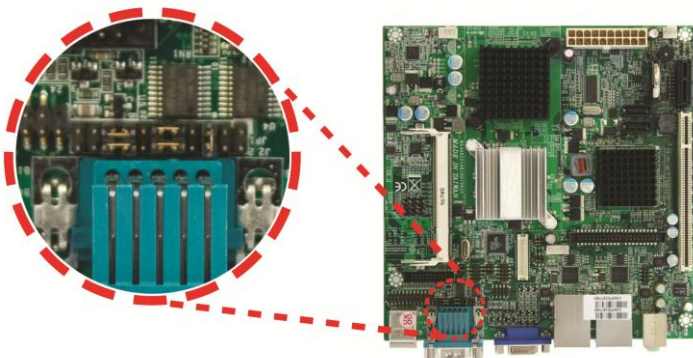
In the case of ATP series, COM2 serial port only can be changed RS-232/RS422 mode settings.

### 2.2.1 RS-232C Mode

ATP series is factory set to RS-232C by default.

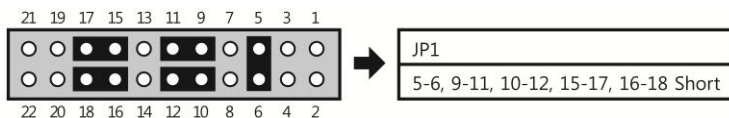


<Figure 2-1> A board of ATP Series



<Figure 2-2> RS-232C mode change Dip switch of ATP series board

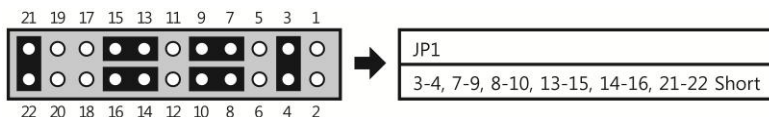
Using JP1 Dip switch in <Figure 2-2>, it is possible to change RS-232C/RS-422. And <Figure 2-3> is JP1 Dip switch setting to use COM2 serial port as RS-232C mode.



<Figure 2-3> JP1 Dip switch setting for RS-232C mode

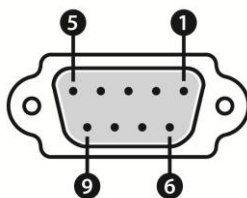
## 2.2.2 RS-422 Mode

If you use COM2 serial port as RS-422mode, set the JP1 Dip switches as shown in <Figure 2-4>



<Figure 2-4> JP1 Dip switch setting for RS-422 mode

**Connector type – D-SUB 9 pin Female**



PIN	Definition	
	RS-232C	RS-422
1	DCD	TX-
2	RXD	TX+
3	TXD	RX+
4	DTR	RX-
5	GND	GNC
6	DSR	-
7	RTS	-
8	CTS	-
9	RI	-

<Table 2-2> Connector and Pin Definition of COM2 serial port

## 3. Automated System Recovery

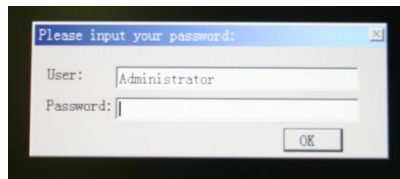
You can recover the system simply with the previous recovery point, using the recovery program, installed on Autobase Touch Panel.

### 3.1 System Recovery

External keyboard is required when you have to reset Autobase Touch Panel as factory state or repair to the recent recovery point, for reasons such as the damage of operating system or loss of important data.

#### 3.1.1 Initialization state recovery

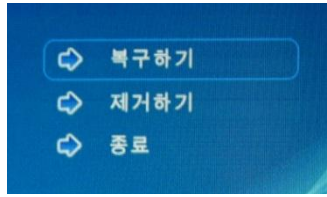
During system boot, press the 'Home' of the keyboard, the login dialog box will be appeared as shown in <Figure 3-1>



<Figure 3-1> Login dialog box

When <Figure 3-1> login dialog box is appeared, input user(as Administrator) and password(default password :admin) that you has set in the recovery program, then the recovery selection screen will be displayed as shown in <figure 3-2>.






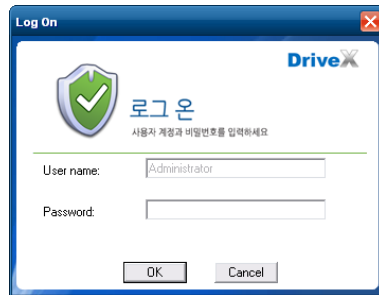
<Figure 3-2 Recovery selection screen

When the recovery selection screen is displayed, using external keyboard, select **복구하기** to recover the initial state and select **제거하기** to delete the restored area.

### 3.1.2 Restore point update

When you complete the commissioning and project in the field, you can update the optimal restore point for preparing of problem occurrence to the system.

After booting up Autobase Touch Panel system normally, double click the  icon at the bottom right corner of the screen then the logon dialog box will be appeared as shown in <Figure 3-3>



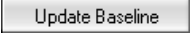
<Figure 3-3> Logon dialog box of recovery program

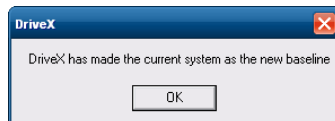
First of all, enter the user and password in <Figure 3-3> the logon dialog box to log on. \*Factory setting – user : Administrator, Password : admin

After log on if you select ‘Restore settings’ on the left side of dialog box, <Figure 3-4> dialog box will be appeared.



<Figure 3-4> Restore settings dialog box

And then if you select  button, the restore point will be updated. If the restore point is updated successfully, restore point update complete dialog box will be displayed as <Figure 3-5>.



<Figure 3-5> Restore point update complete dialog box

Generally, it is recommended to choose the disable restore option in the bottom of the dialog box. And modify restore settings carefully. If you choose a restore mode, the system will be restored each time depending on how the selected restore mode. For example, if you select ‘Restore baseline at restart’, the restore point will be restored whenever the system is restarted.

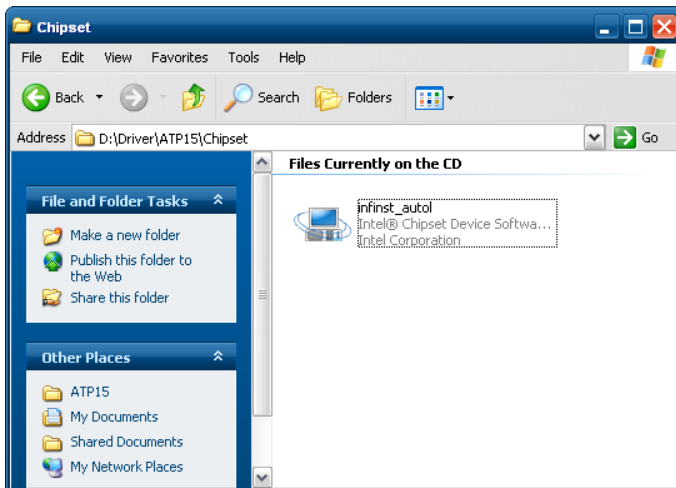
< Empty Page >

## 4. Manual System Recovery


### 4.1 Device Driver Setup

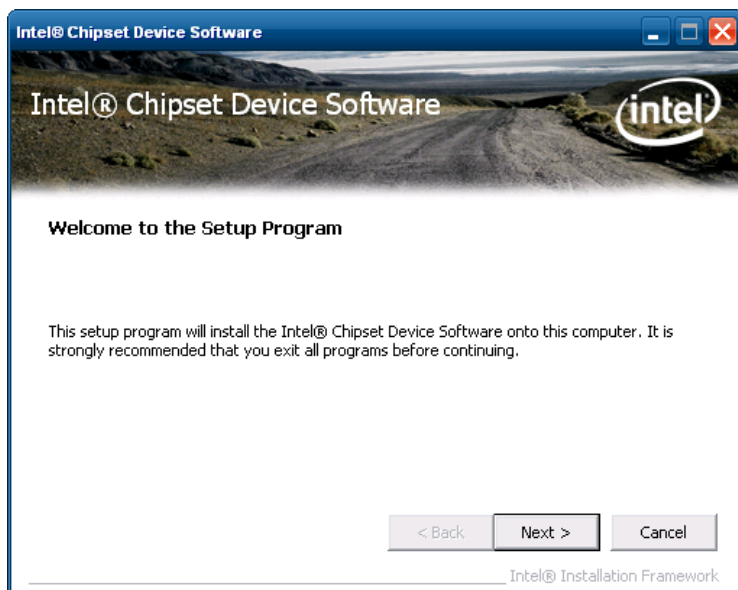
Install the device driver of Autobase Touch Panel after the Windows Embedded Standard OS setup. You can install device drivers from Touch System Software DVD or the Internet downloading. Touch System Software DVD is included in the product package.

#### 4.1.1 Mainboard chipset driver setup



<Figure 4-1> Mainboard chipset driver folder

You can find 'infinst911autol.exe' file as shown in <Figure 4-1> when you select 'Driver\ATP15\Chipset' folder from Touch System Software DVD. And run 'infinst911autol.exe', <Figure 4-2> initial screen will be displayed. Then select  from <figure 4-2>, <Figure 4-3> license agreement dialog box will be displayed.

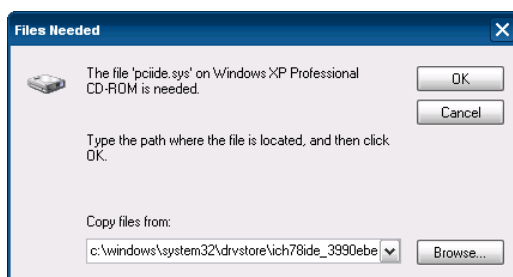


<Figure 4-2> Initial screen of the mainboard chipset driver setup



<Figure 4-3> License Agreement dialog box of mainboard chipset driver setup

If you select  in <Figure 4-3>, the driver installation process will be continued. During the driver installation, if it needed an OS file, <Figure 4-4> screen will be appeared and then select the needed file in '\Driver\WindowsXP\_POSReady2009\_SystemFiles' folder of Touch System Software DVD and progress the installation.



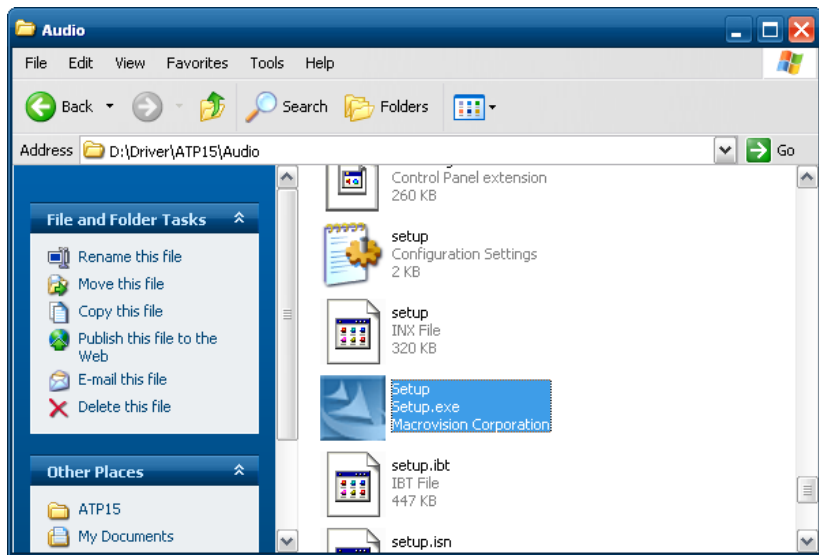
<Figure 4-4> Specify OS System Setup file

When the installation is complete, reboot system information screen will be appeared as shown in <Figure 4-5> and proceed to reboot.



<Figure 4-5> Mainboard chipset driver installation complete screen

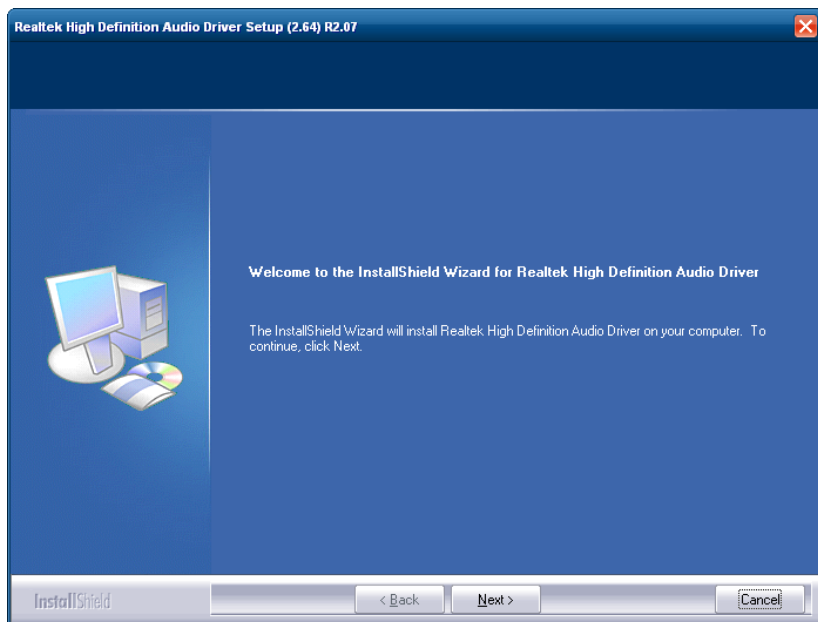
## 4.1.2 Audio driver setup



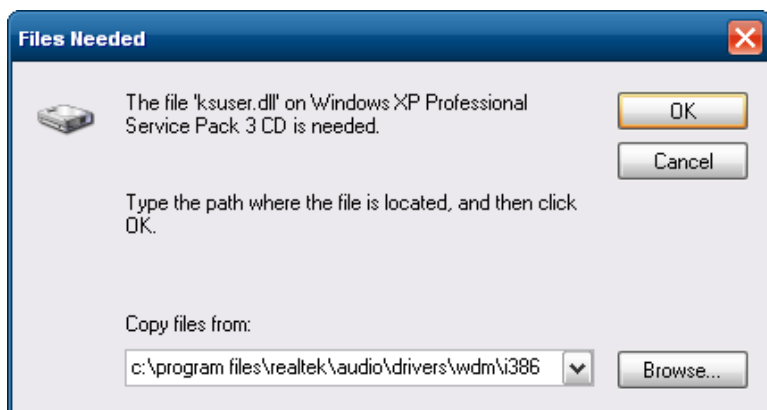
<Figure 4-6> Audio driver folder

You can find the setup file in 'Driver\ATP15\Audio' folder of Touch system Software DVD. And if you run 'Setup.exe' from <Figure 4-6>, the initial screen will be displayed as shown in <Figure 4-7>. Then, if you select  in <Figure 4-7> it will proceed to setup. During the installation, a dialog box will be displayed to specify the path of the related system file as shown in <Figure 4-8>.




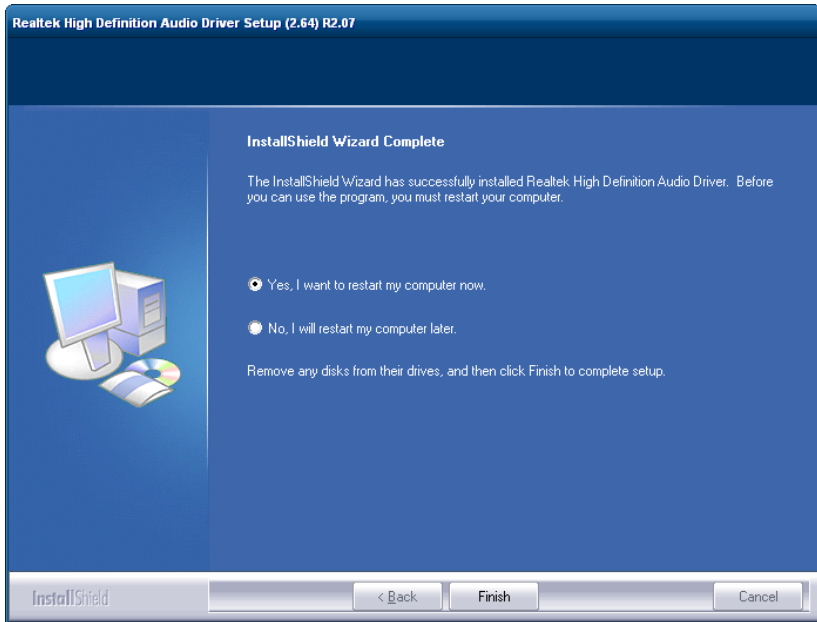


<Figure 4-7> Audio driver setup initial screen



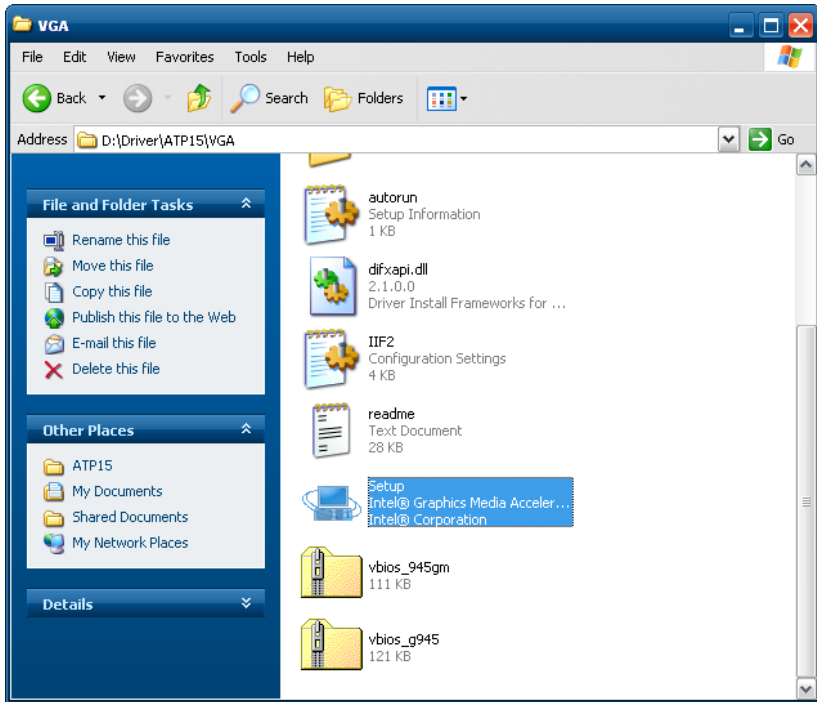
<Figure 4-8> Related system file location setting dialog box

After the related system file location setting if you select  button, the audio driver installation will be completed and Windows restart settings dialog box will be displayed as shown in <Figure 4-9>



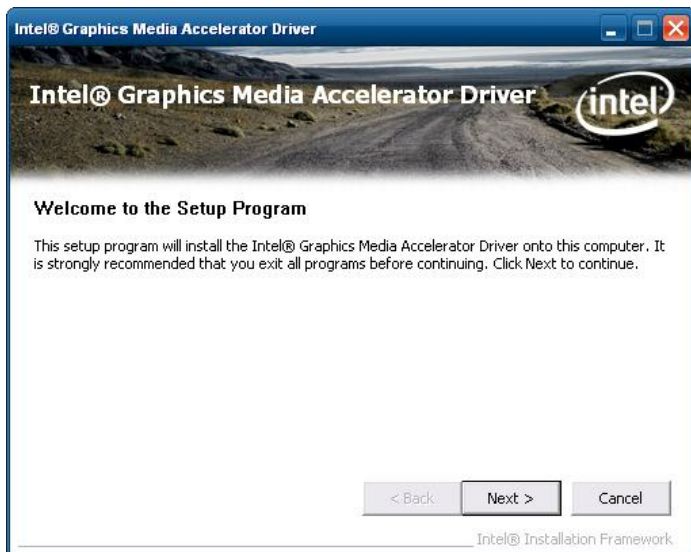
<Figure 4-9> Windows restart settings dialog box

### 4.1.3 Graphic driver setup



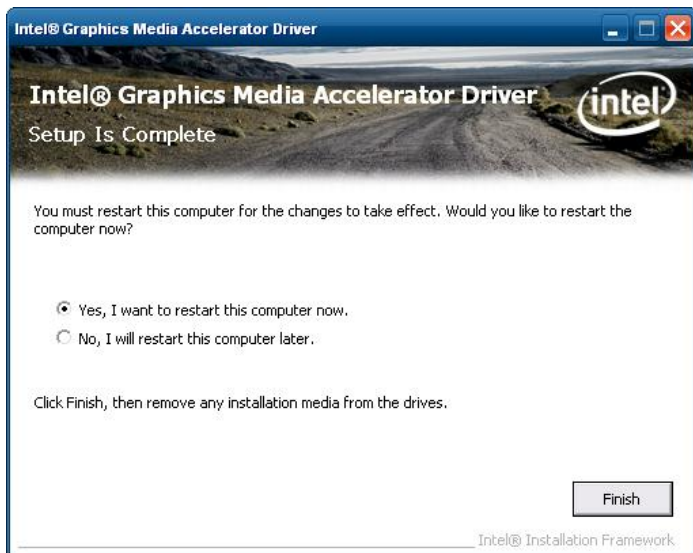
<Figure 4-10> Graphic driver folder

If you select the provided Touch System software DVD ‘Driver\ATP15\VGA’ folder, the files will be displayed as <Figure 4-10>. And run ‘Setup.exe’ in <Figure 4-10>, the graphic driver setup initial screen will be appeared as <Figure 4-11>



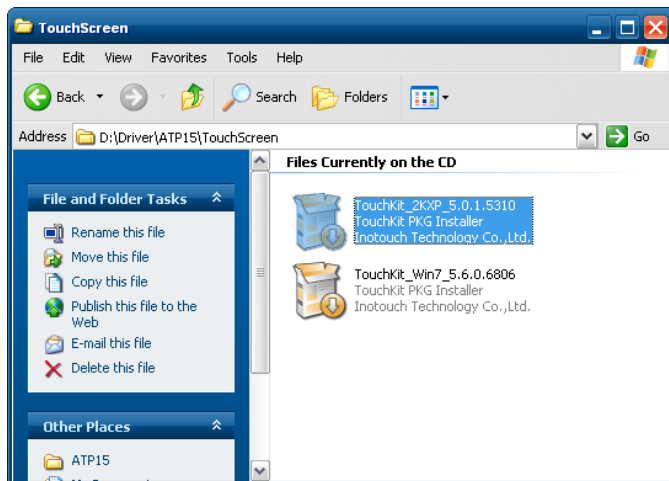
<Figure 4-11> Graphic driver setup initial screen

Then, select  button in <Figure 4-11>, the graphic driver setup will be started. When the graphic driver setup completed <Figure 4-12> dialog box will be displayed and you can set whether to restart the computer or not. After installing the graphic driver, adjust the proper screen resolution.  
(ATP15/ATP15P:1024 \* 768, ATP17/ATP19:1280\*1024)



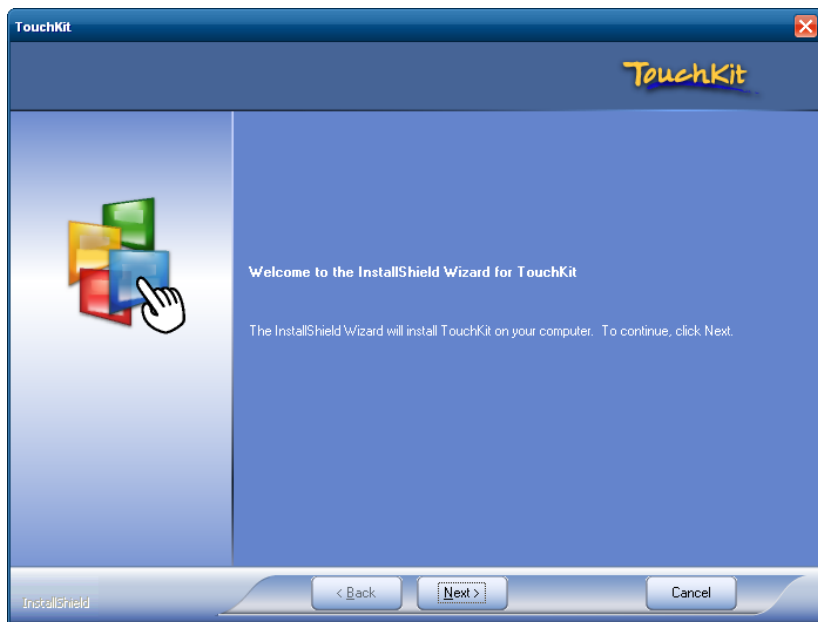
<Figure 4-12> Graphic driver setup complete dialog box

## 4.1.4 Touch screen driver setup

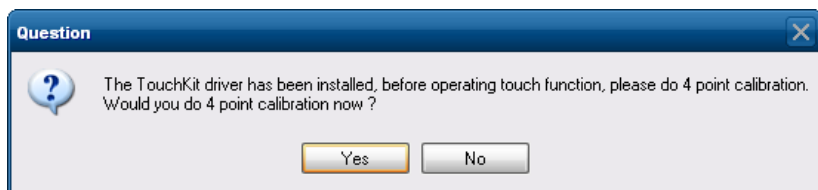


<Figure 4-13> Touch screen driver folder

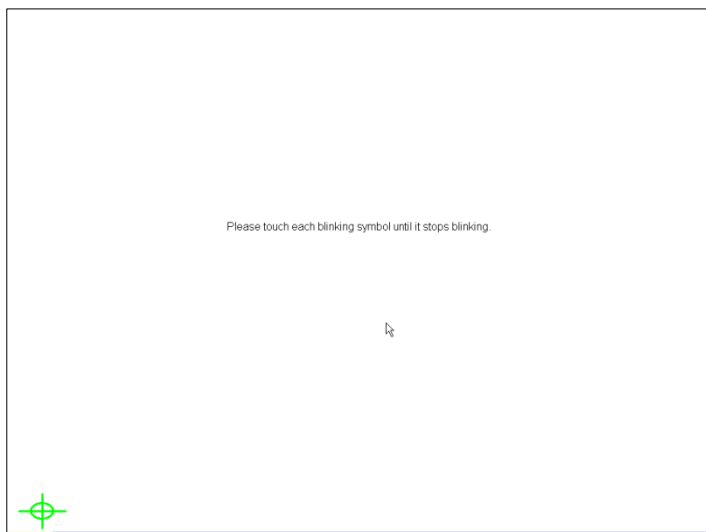
If you select 'Driver\ATP15\TouchScreen' folder from Touch System Software DVD, you can find 'TouchKit\_2KXP\_5.0.1.5310.exe' as shown in <Figure 4-13>. And if you run 'TouchKit\_2KXP\_5.0.1.5310.exe', you can see the initial screen for setting as shown in <Figure 4-14>. Then, select  button, the setup program will be run and start to install the touch screen driver. After you have completed the touch screen driver installation, <Figure 4-15> dialog box will be displayed. And select  button in <Figure 4-15>, the screen calibration program will be executed as shown in <Figure 4-16>. Then, set the screen position of the touch screen with the calibration program of <Figure 4-16>. And if you need the detailed screen calibration, run 'Configure Utility', one of the installed touch screen applications. Then select  button of the 'Tools' tab in <Figure 4-17> to do a finer screen calibration.



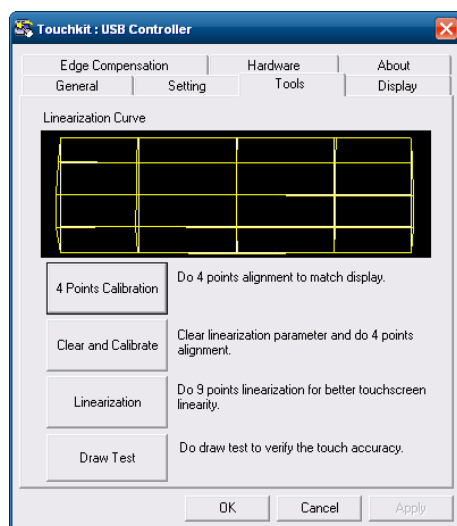
<Figure 4-14> Touch screen driver setup initial screen



<Figure 4-15> Touch screen driver setup complete dialog box



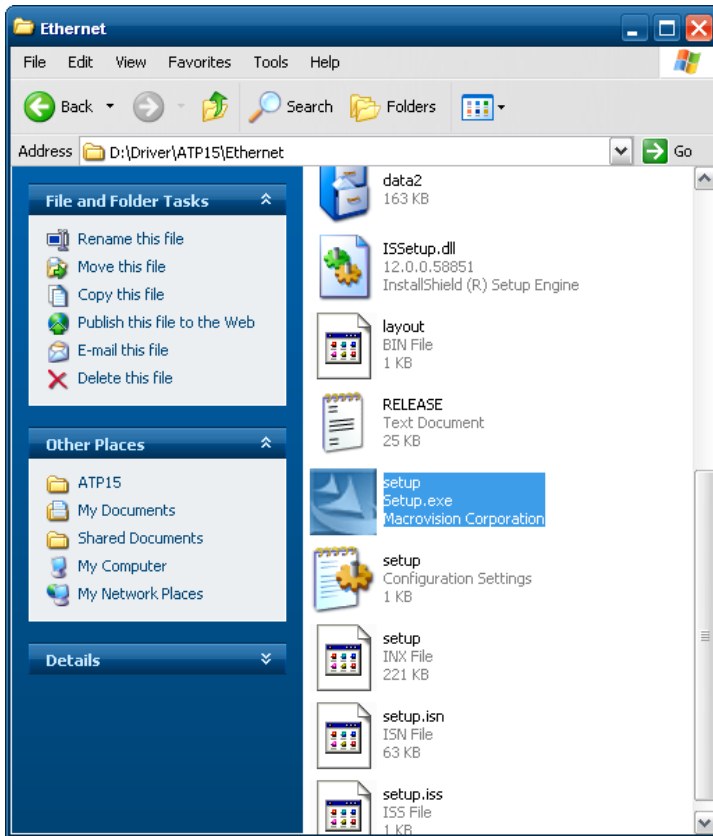
<Figure 4-16> Touch screen calibration



<Figure 4-17> Tools tab of configure utility




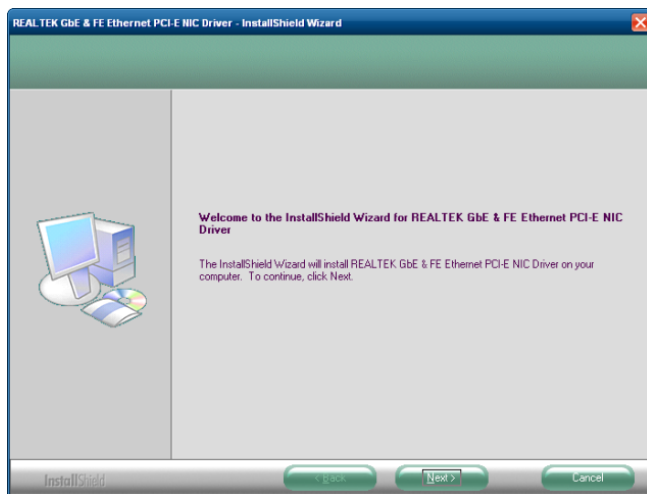
## 4.1.5 Ethernet driver setup



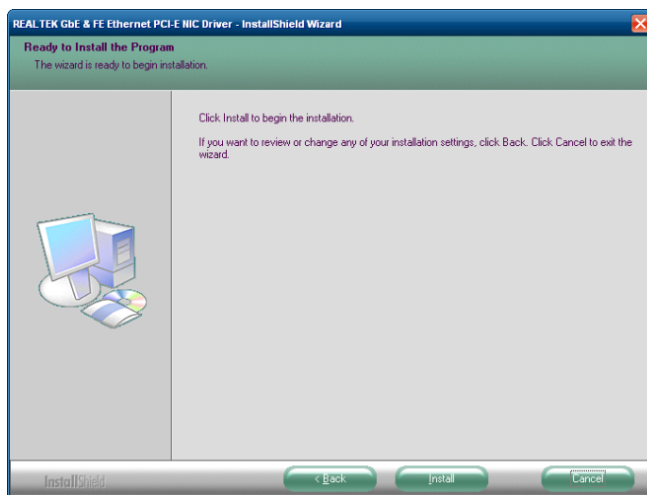
<Figure 4-18> Ethernet driver folder

When you open 'Driver\ATP15\Ethernet' folder of 'Touch System Software DVD', you can find files as shown in <Figure 4-18>. And if you run 'Setup.exe' file, installShield wizard will be started as shown in <Figure 4-19>.


Select  in <Figure 4-19>, a dialog box will be displayed to specify the path of the associated system file as shown in <Figure 4-20>.

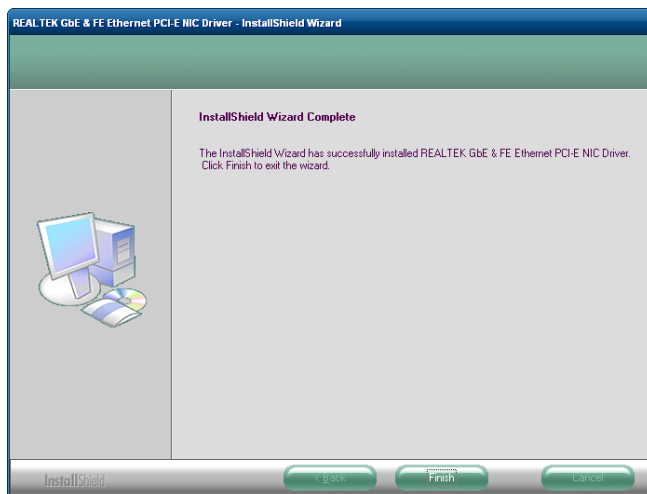


<Figure 4-19> InstallShield Wizard



<Figure 4-20> Screen to run the Ethernet driver installation

Select  in <Figure 4-20>, the Ethernet driver setup will be started.



<Figure 4-21> Ethernet driver setup complete dialog box

When the Ethernet driver setup has been completed, the setup complete dialog box will be displayed as shown in <Figure 4-21>

## 4.2 Programs for Autobase Touch Pro Pack

### 4.2.1 AutoBase Touch SCADA Program installation

Autobase Touch Pro Pack required Microsoft DotNet Framework, Autobase SCADA Program and Autobase SCADA license by default.

For more details about the installable Autobase SCADA version and how to install the license, contact Autobase technical support team.

# Customer service

---

## Limited Warranty

---

When this product goes out of order under the normal use of customer, we will repair it free of charge for one year from the date of your purchase. Even during the warranty period, we will provide repair services with reasonable charges for problems due to customer's negligence and natural disasters.

---

## Paid Service

---

**Autobase, Inc. does not warrant in the following cases.**

- ❶ Malfunction by foreign substances(water, soda, coffee, toys, etc.) spills into the product.
- ❷ Damage and malfunction of a product due to be dropped or shocked
- ❸ Exterior damage and deformation in organic solvents such as thinner, benzene,
- ❹ Malfunction by using non-genuine parts or supplies.(ex: adapter, cooling fan, LCD, etc.)
- ❺ Repair and replacement of parts due to normal wear and tear.
- ❻ Failure due to wrong voltage.
- ❼ Malfunction due to the failure of connected device.
- ❽ Damage or loss of product parts due to disassemble by consumer
- ❾ Defects or damages result from repairs or modifications by someone other than customer service representative of Autobase, Inc. Technical Support Center.
- ❿ Failure by natural disasters(fire, flood, lightning, gas, salt, earthquake, etc.)
- ⓫ Reinstallation due to the improper installation of consumers
- ⓬ Service request, but the product has no defective parts, will be charged service fee.(Please read the user manual)
- ⓭ Defects or damage that result from improper operation of user.



## Safety Information

- 1 For any reason, damage caused by disassembling the equipment will not be covered under the warranty.
- 2 Do not open the cabinet to avoid electric shock. Please request service to qualified technicians.
- 3 Sound or images might be distorted because to place this product near devices, emit electromagnetic waves.
- 4 Protect touch panel from rain or moisture to avoid fire or electric shock.
- 5 Unplug the power cord and all connected cables during thunderstorms.
- 6 Connection of Network port on the touch panel is allowed 10BASE-T, 100BASE-T and 1000BASE-T. Don't connect other kinds of network cables or telephone lines.  
Improper connection can result in the current load on the connector can cause a fire, overheating or malfunctioning.
- 7 Don't block the air-intake and exhaust vents.
- 8 This touch panel surface is made of metal so if you do not use in the ground environment you can feel the subtle flow of currents.

## Limited Warranty Card

### autobaseTouch Panel Computer

Autobase, Inc. warrants this panel computer against defects in materials and workmanship under normal use for the warranty period.

Autobase, Inc.  
CEO Kim, Do Yul



Purchaser	S/N		
	Organization		Phone
	Address		
Distributor	Date of Purchase		
	Month/	Day/	Year/
	Name of Distributor		Phone
	Address		
	Name of Dealer		



***AutoBase***

1201, Biz Center, SKnTechno Park, Sangdaewon-dong,  
Jungwon-gu, Seongnam-si, Gyeonggi-do, Korea  
Phone : +82.31.776.0800 / Fax : +82.31.776.0802  
<http://www.autobase.biz>